

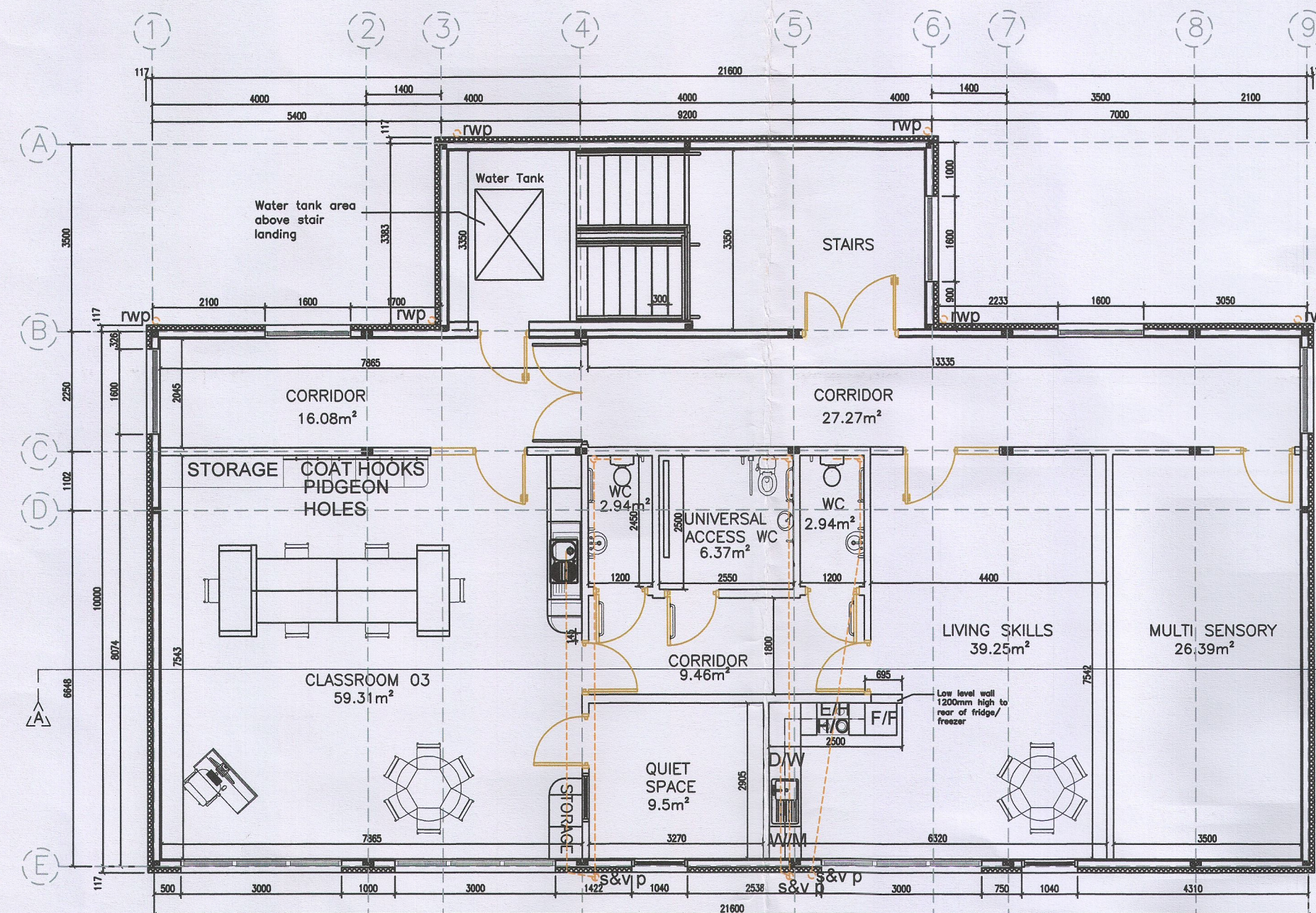
FOUNDATIONS ARE SUBJECT TO SITE CONDITIONS AND ENGINEERS DETAILS.

THE FLOOR TO BE SELECTED STEEL FRAME WITH INSULATED PANELS WITH TIMBER FLOORING WITH SELECTED FLOOR FINISHES.

THE WALLS TO BE SELECTED STEEL FRAME WITH SELECTED COLOUR KINGSPAN WALL FINISH EXTERNALLY.

THE ROOF TO BE SELECTED STEEL FLAT ROOF WITH SELECTED FLAT ROOF MEMBRANE TO DETAIL.

SELECTED COLOUR DOUBLE GLAZED WINDOWS AND DOORS TO DETAIL.

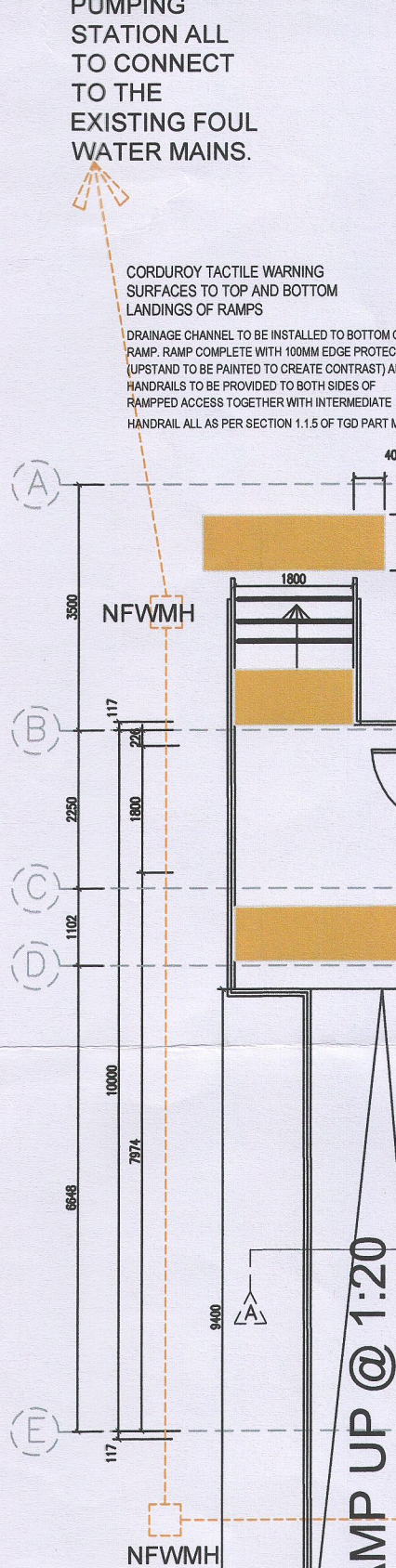


FIRST FLOOR PLAN

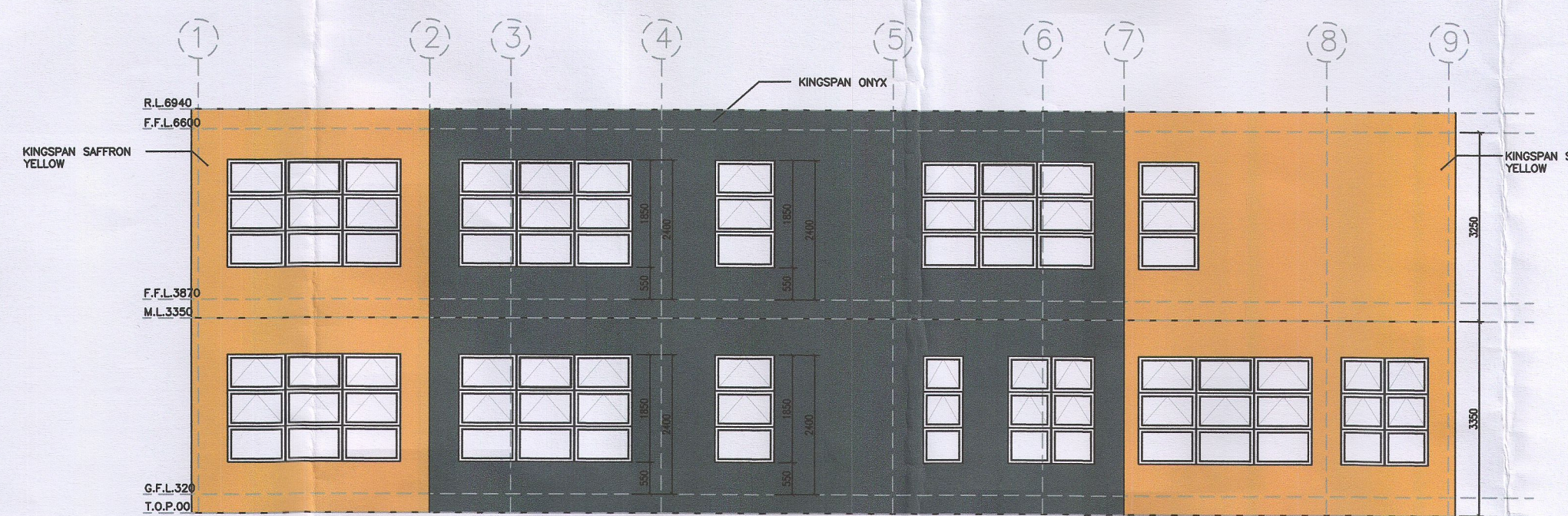
CONNECT TO NEW FOUL WATER PUMPING STATION ALL TO CONNECT TO THE EXISTING FOUL WATER MAINS.

CONNECT TO THE EXISTING SURFACE WATER MAINS.

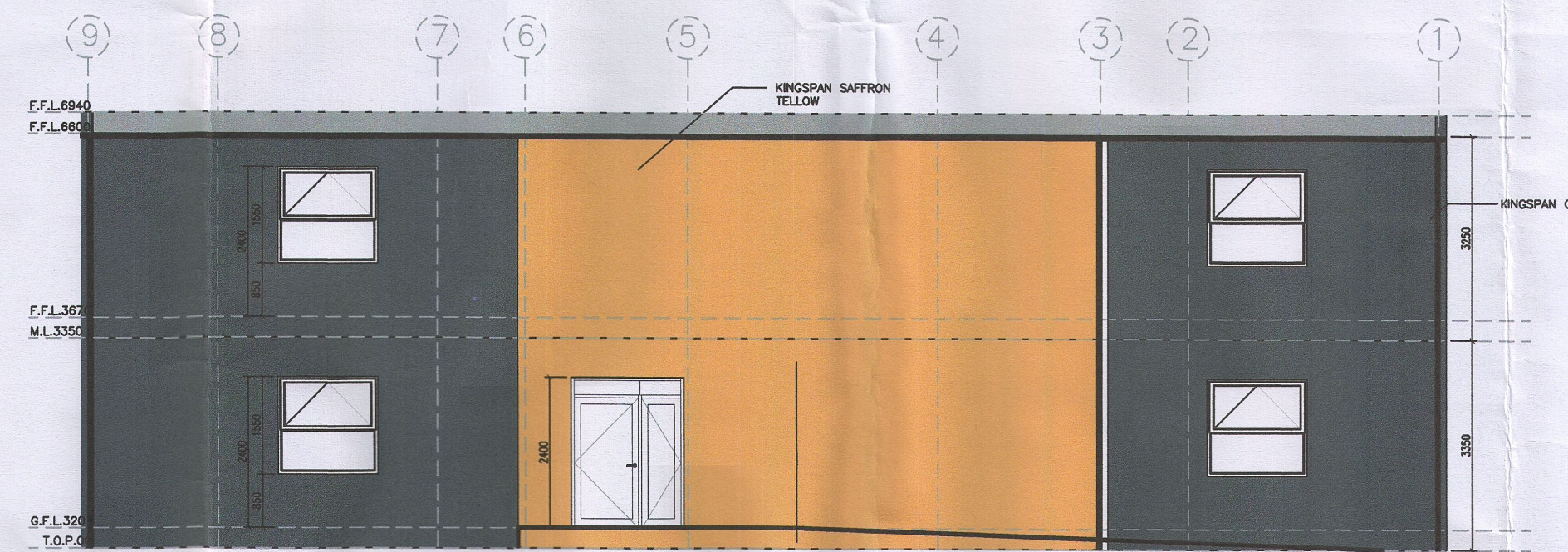
CORRIDOR TACTILE WARNING SURFACES TO TOP AND BOTTOM LANDINGS OF STAIRS AND STEP NOSINGS TO INCORPORATE A PERMANENT CONTRASTING CONTINUOUS MATERIAL ON THE TREAD TO CONTRAST VISUALLY WITH THE REMAINDER OF THE TREAD AND HANDRAILS/BALUSTRADES TO BE PROVIDED TO BOTH SIDES OF STEPPED ACCESS TOGETHER WITH INTERMEDIATE HANDRAILS TO BE PROVIDED TO BOTH SIDES OF STEPPED ACCESS ALL AS PER SECTION 1.1.5 OF TGD PART M.



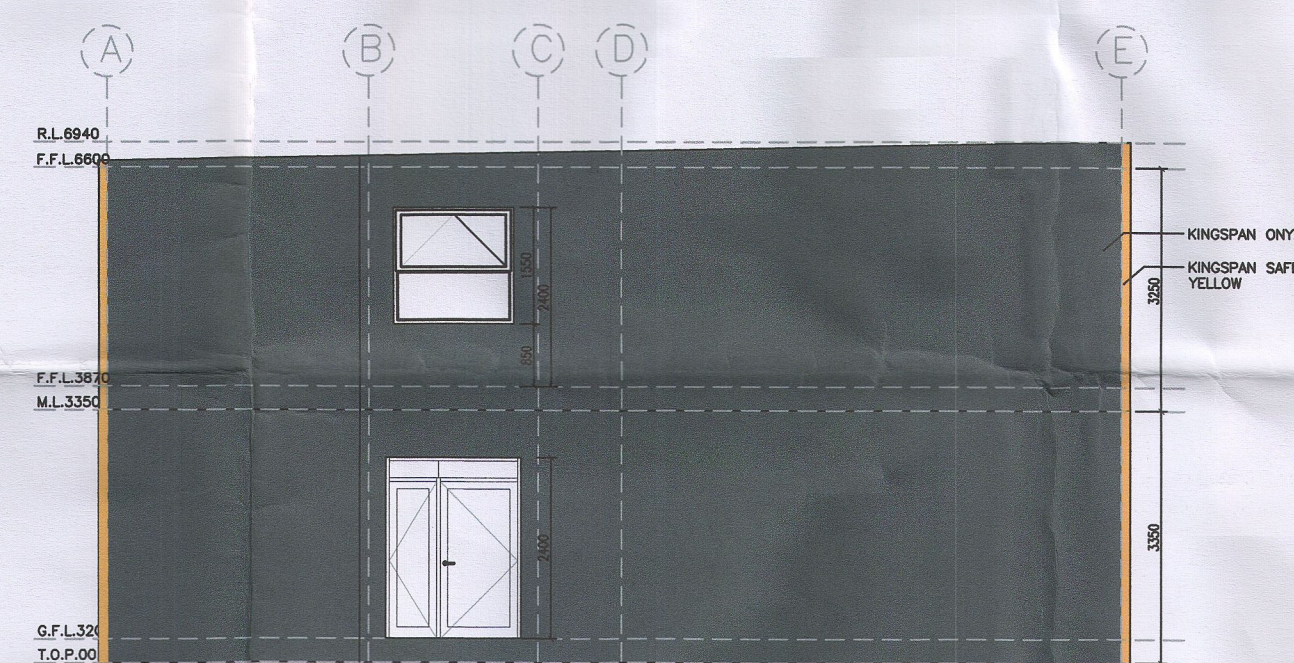
GROUND FLOOR PLAN



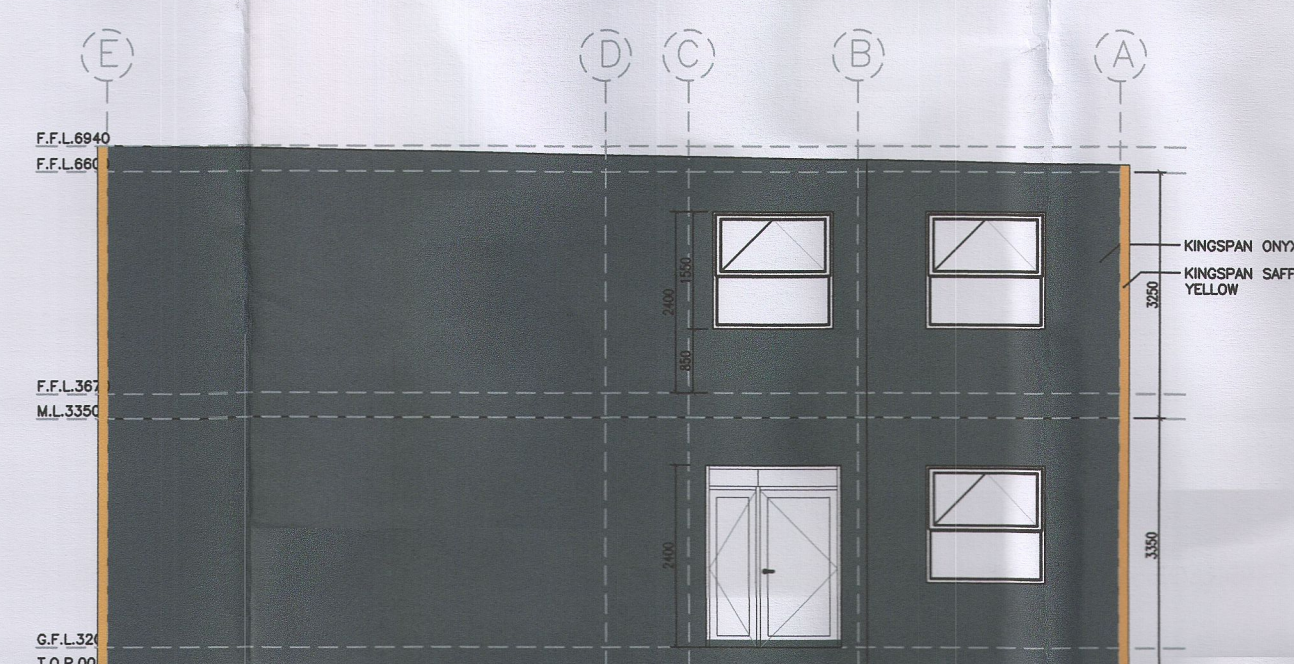
SOUTH ELEVATION



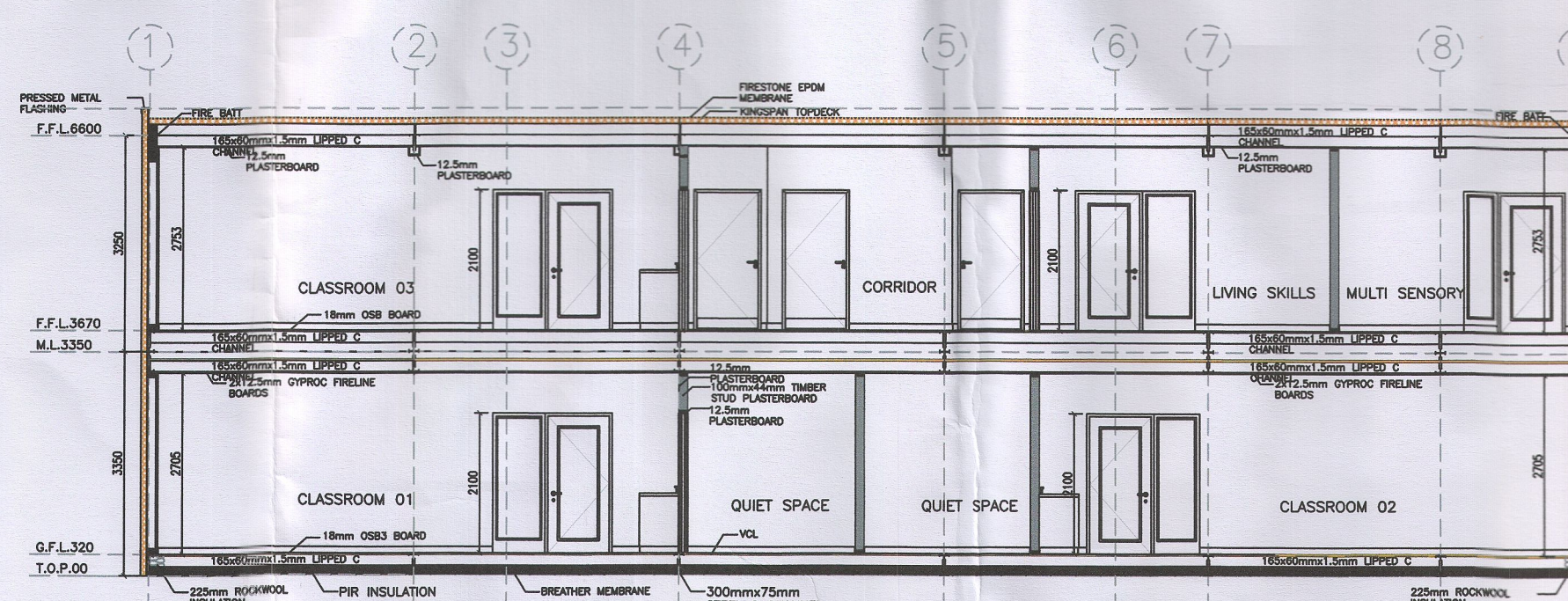
NORTH ELEVATION



EAST ELEVATION



WEST ELEVATION



SECTION A-A

- Notes
1. Copyright reserved.
 2. Work to figured dimensions only. Do not scale print.
 3. The contractor is responsible for checking all levels and dimensions on site and shall refer all discrepancies to the architect.
 4. Where appropriate, for details of r.c. structure, or mechanical and electrical details, see engineers drawings.
 5. Proprietary items shall be fixed in strict accordance with manufacturers instructions.
 6. Sizes of proprietary items shall be checked with manufacturer.
 7. The contractor shall be responsible for the co-ordination of structure, finishes and services.
 8. All construction methods, materials, services & installations to be in accordance with all Irish Building Regulations and codes of practice of the time of construction. All sub-contractors are ultimately responsible for ensuring compliance with Regulations within their own trade.

Revisions

| No. | Date | Details | Initial |
|-----|------|---------|---------|
| | | | |

FOUNDATIONS ARE SUBJECT TO SITE CONDITIONS AND ENGINEERS DETAILS.

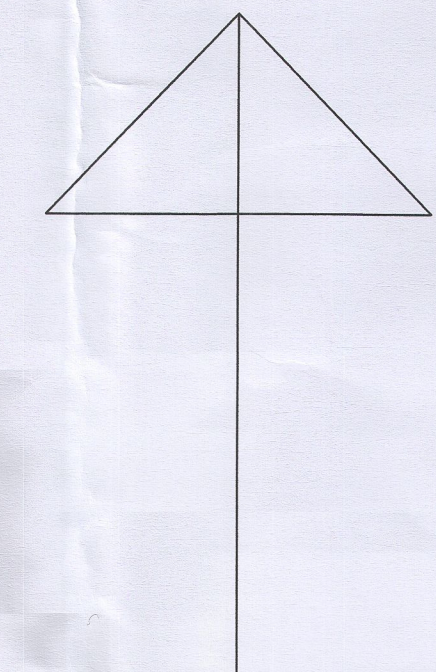
THE FLOOR TO BE SELECTED STEEL FRAME WITH INSULATED PANELS WITH TIMBER FLOORING WITH SELECTED FLOOR FINISHES.

THE WALLS TO BE SELECTED STEEL FRAME WITH SELECTED COLOUR KINGSPAN WALL FINISH EXTERNALLY.

THE ROOF TO BE SELECTED STEEL FLAT ROOF WITH SELECTED FLAT ROOF MEMBRANE TO DETAIL.

SELECTED COLOUR DOUBLE GLAZED WINDOWS AND DOORS TO DETAIL.

NORTH



MARY HARRINGTON ARCHITECTS. MR.IAL.
THE PINES, BALLYDUFF EAST, KILMEADEN, Co. WATERFORD.
TEL/FAX: (051)384847, MOBILE: (086) 8940571.

PLANNING PERMISSION - SECTION 5 DECLARATION

PROPOSED NEW MODULAR ACCOMMODATION WORKS TO ST. KILLIANS SPECIAL SCHOOL, OLD YOUGHAL ROAD, MAYFIELD, CORK

PROPOSED GROUND AND FIRST FLOOR PLAN, SECTION A-A AND ELEVATIONS

SCALE: A1 @ 1:100 DATE: JULY 2021 DN BY: MH DRAWING NO.: 21-125-PP-S5D-02